

101 CONSTITUTION AVENUE, NW
WASHINGTON, DC



Leasing Information:
202.513.6700

Merrill Turnbull
202.513.6713
mturnbull@lpc.com

Adam Biberaj
202.513.6736
abiberaj@lpc.com

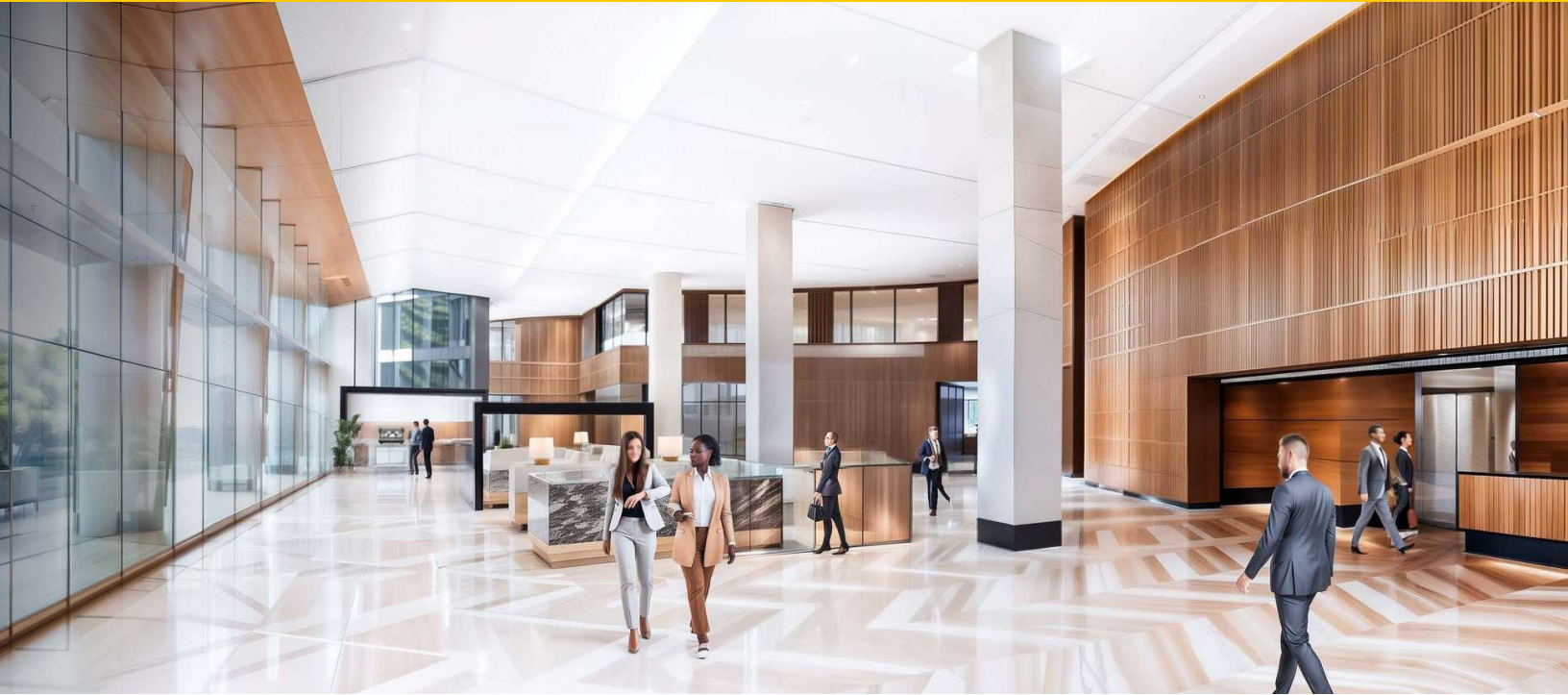
Tim Whitebread
202.513.6712
twhitebread@lpc.com

Lincoln

Lincoln Property Company
101 Constitution Avenue, NW Suite 325 East
Washington, DC 20001

www.lpc.com

101 CONSTITUTION AVE, NW



Property Highlights

- \$50M+ renovation underway, expanding the rooftop terrace, lobby, two-story fitness center, and elevators for a modern, elevated experience
- New conference center facility (can accommodate 175 people)
- Move-in ready suite overlooking the Capitol
- Ample underground parking
- Fitness center & bike storage

Availabilities

SF

Date Available

LL120	4,931 SF	1/2025
100W	6,592 SF	Immediately
220W	3,100 - 14,150 SF	Immediately
320W	10,861 SF	Immediately
320E	2,187 SF	Immediately
400E	17,568 SF	Immediately
700	25,000 - 54,784 SF	6/2025
850W	17,699 SF	2/2027
900	44,873 SF	2/2027

Merrill Turnbull

202.513.6713
mturnbull@lpc.com

Adam Biberaj

202.513.6736
abiberaj@lpc.com

Tim Whitebread

202.513.6712
twhitebread@lpc.com

Lincoln



Merrill Turnbull
202.513.6713
mturnbull@lpc.com

Adam Biberaj
202.513.6736
abiberaj@lpc.com

Tim Whitebread
202.513.6712
twhitebread@lpc.com

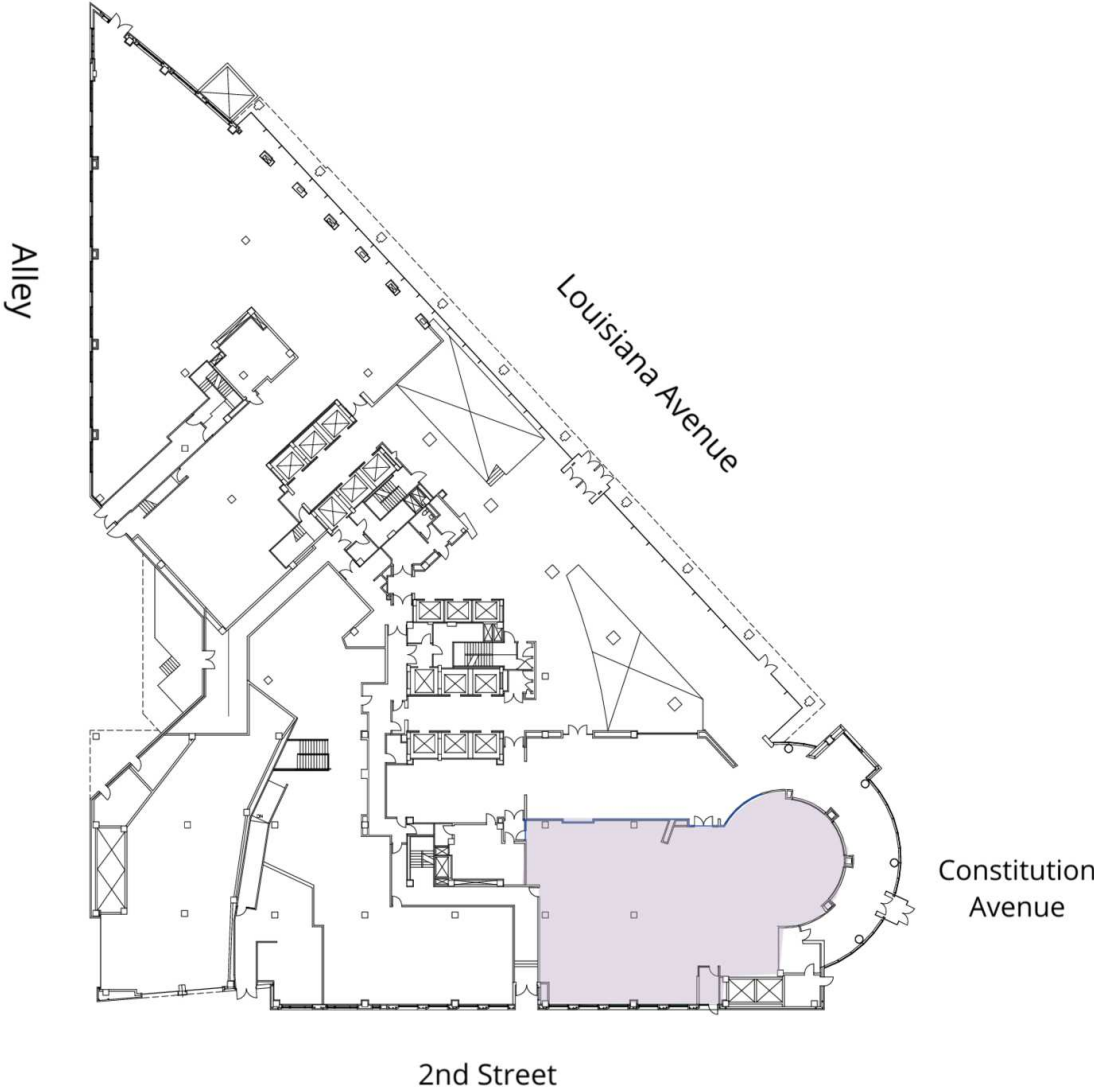
Lincoln



Suite	Size	Description
■ LL120	4,931 SF	Lower level available Q1 2025

Merrill Turnbull **Adam Biberaj** **Tim Whitebread**
202.513.6713 202.513.6736 202.513.6712
mturnbull@lpc.com abiberaj@lpc.com twhitebread@lpc.com

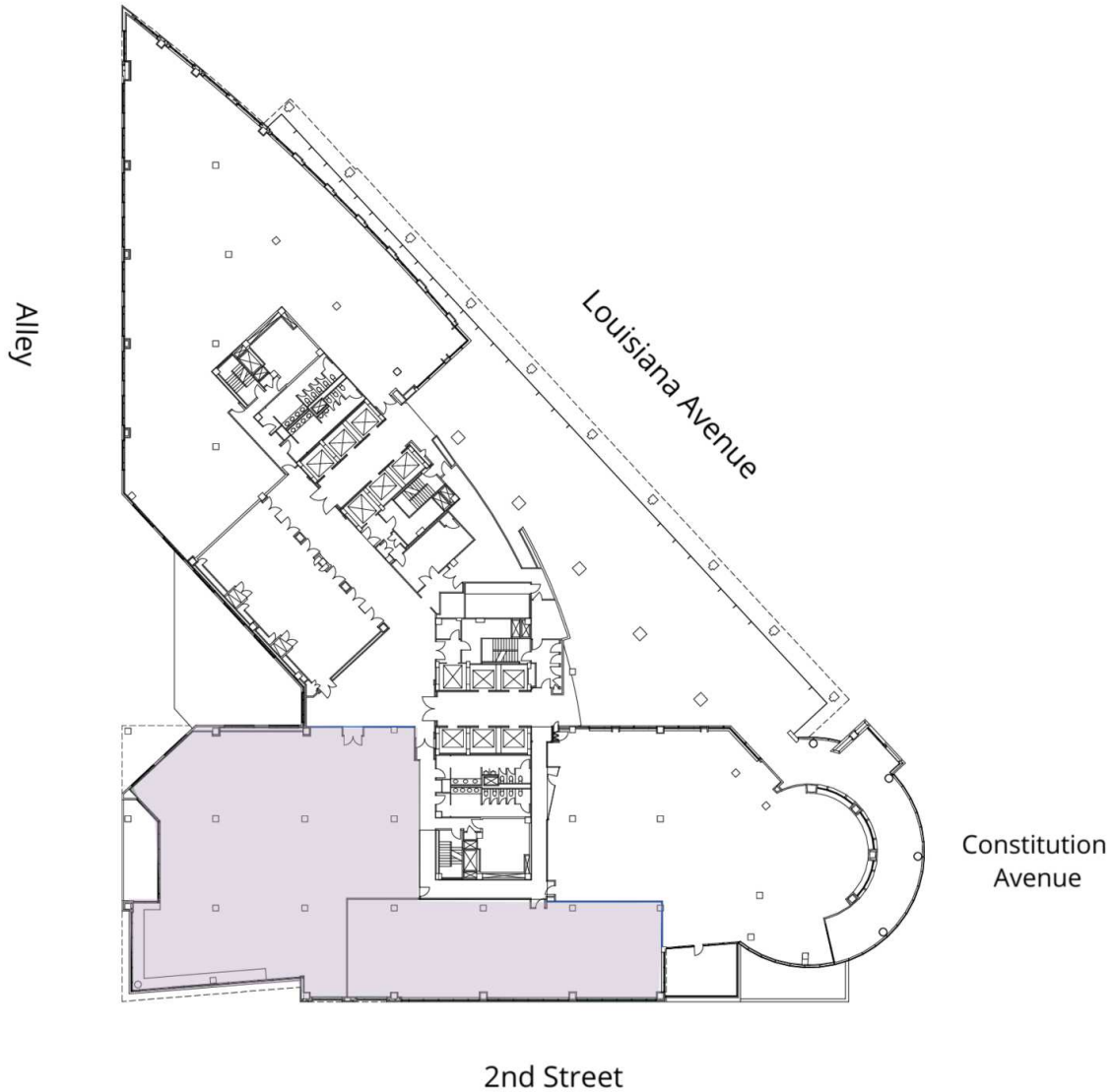
Lincoln



Suite	Size	Description
■ 100W	6,592 SF	Available immediately

Merrill Turnbull **Adam Biberaj** **Tim Whitebread**
 202.513.6713 202.513.6736 202.513.6712
 mturnbull@lpc.com abiberaj@lpc.com twhitebread@lpc.com





Suite	Size	Description
■ 220W	3,100 - 14,150 SF	Spec suites soon to begin construction with mid-2025 delivery date. Adjacent to building conference facility

Merrill Turnbull **Adam Biberaj** **Tim Whitebread**
 202.513.6713 202.513.6736 202.513.6712
 mturnbull@lpc.com abiberaj@lpc.com twhitebread@lpc.com

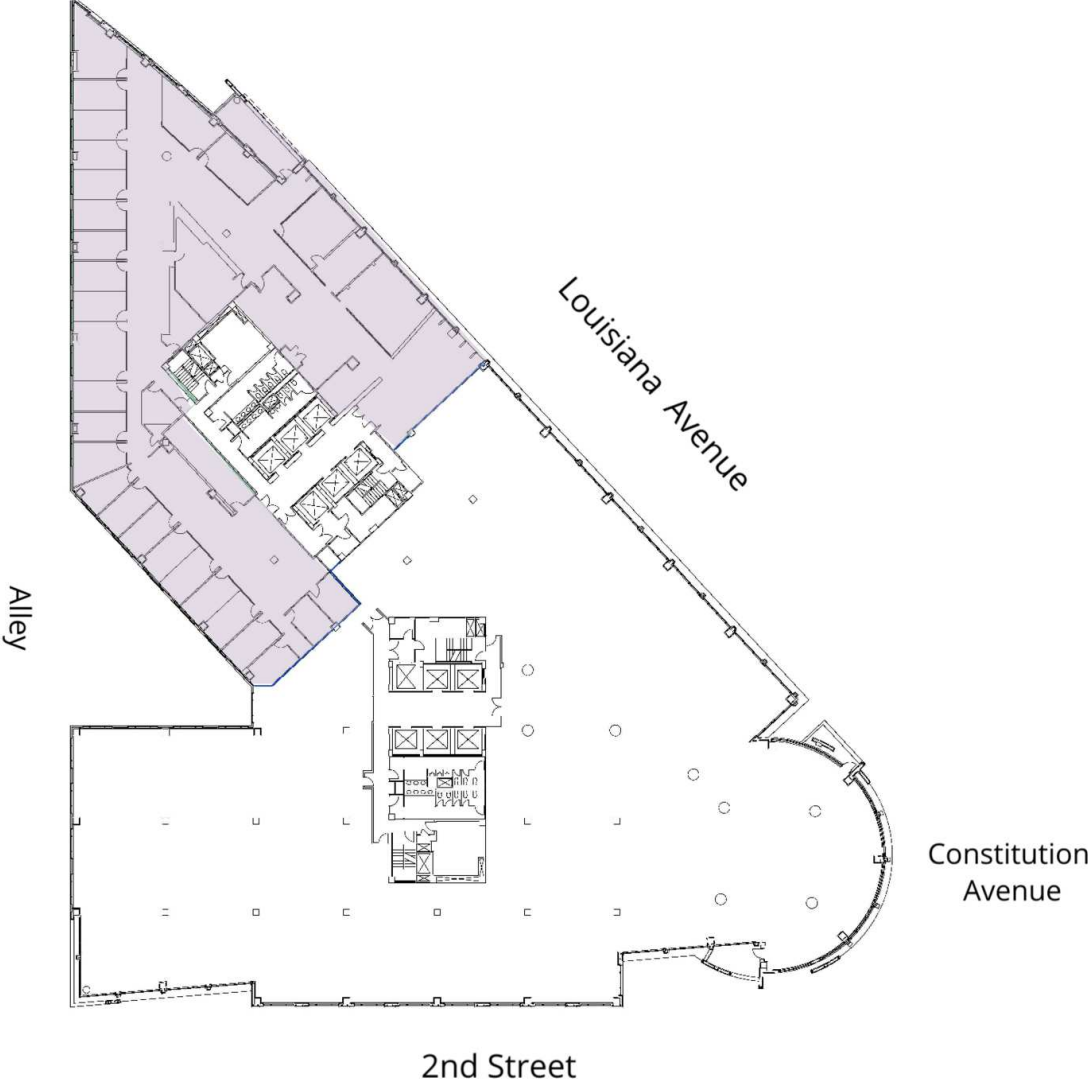
Lincoln



Suite	Size	Description
■ 320W	10,861 SF	Available Immediately
■ 320E	2,187 SF	Shell condition, available immediately.

Merrill Turnbull **Adam Biberaj** **Tim Whitebread**
202.513.6713 202.513.6736 202.513.6712
mturnbull@lpc.com abiberaj@lpc.com twhitebread@lpc.com

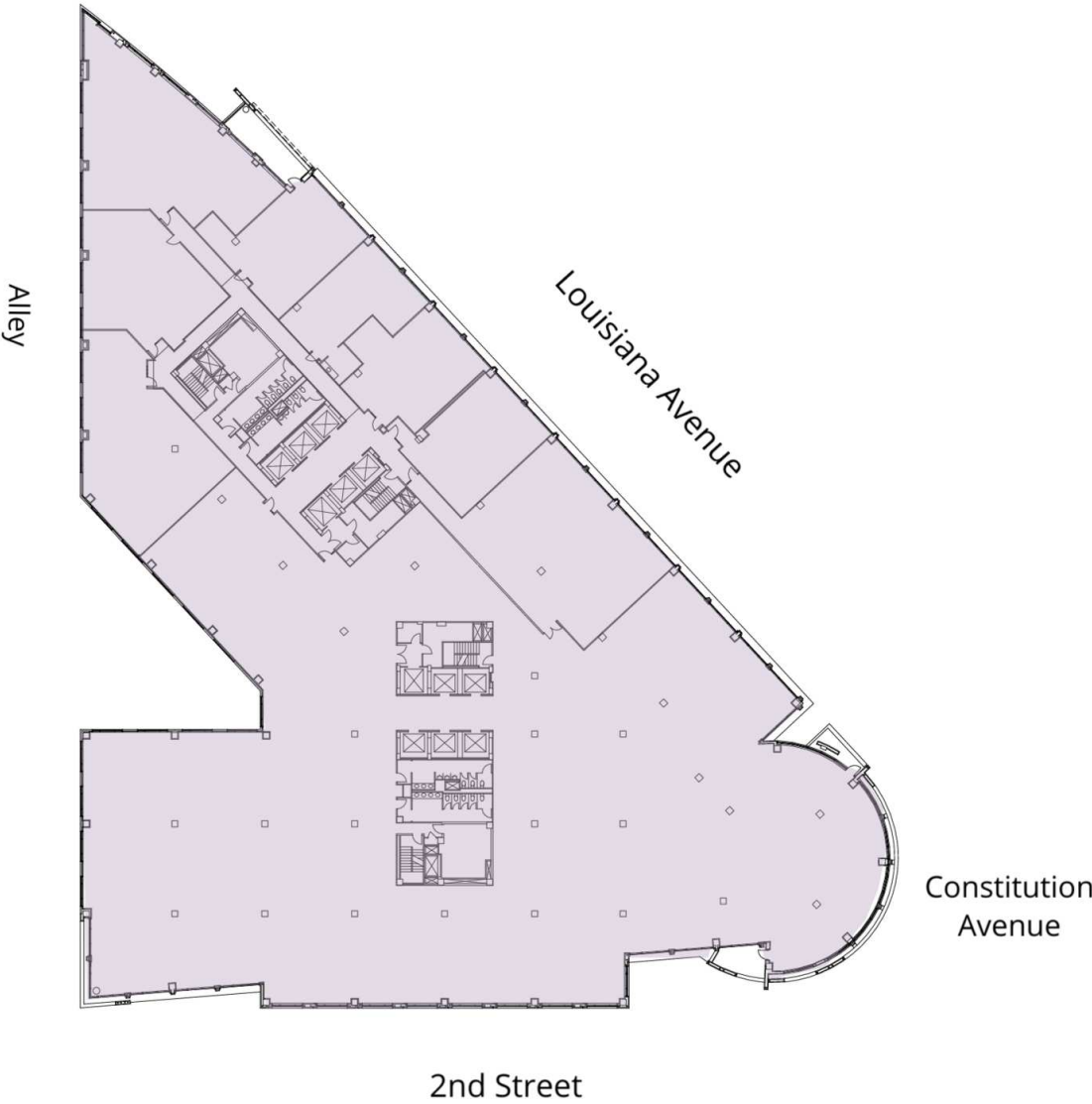
Lincoln



Suite	Size	Description
■ 400E	17,568 SF	Available Immediately

Merrill Turnbull **Adam Biberaj** **Tim Whitebread**
202.513.6713 202.513.6736 202.513.6712
mturnbull@lpc.com abiberaj@lpc.com twhitebread@lpc.com

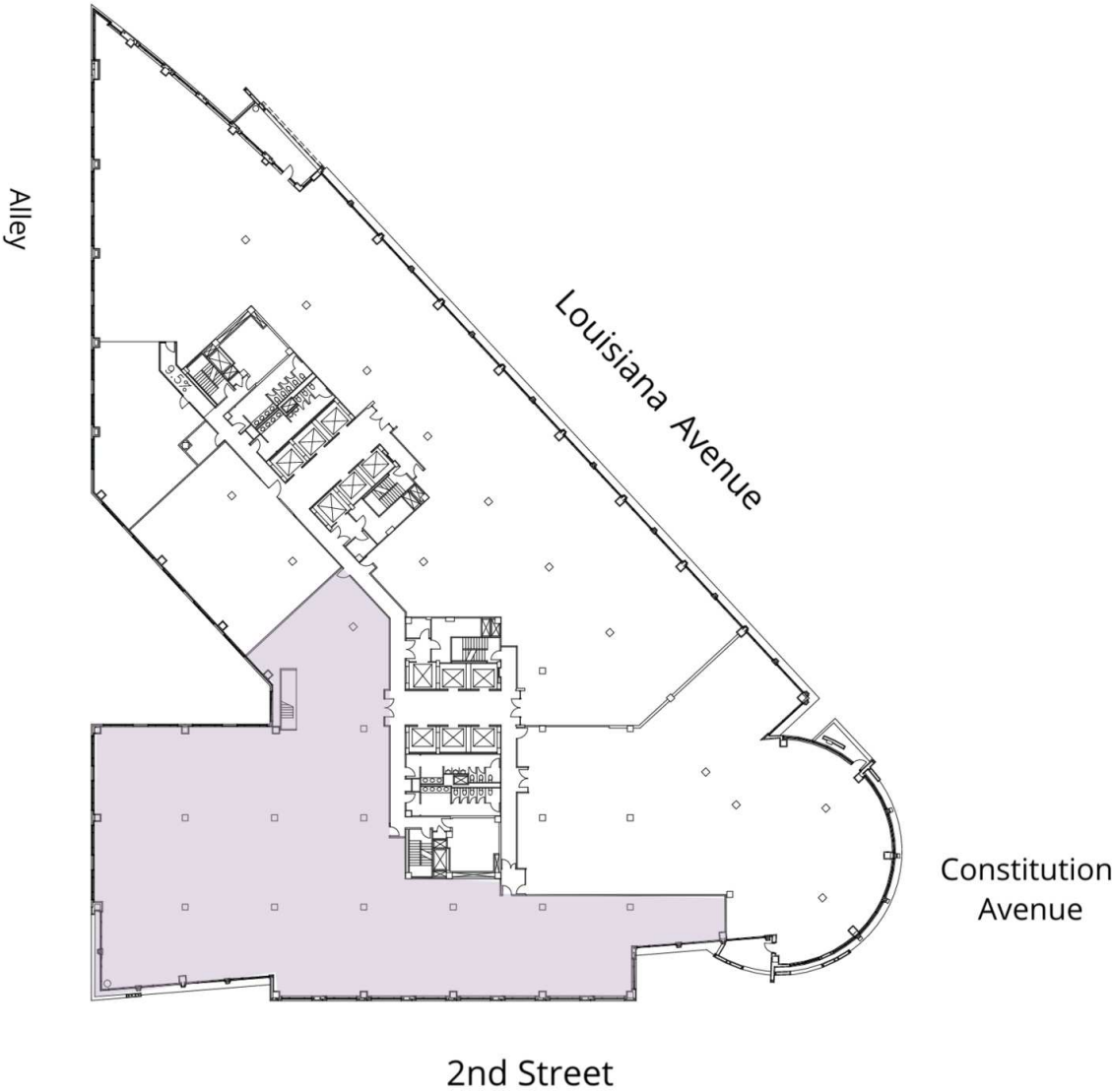




Suite	Size	Description
700	25,000 - 54,784 SF	Opportunity to lease upper floor space with multiple private terraces and best views of the Capitol!

Merrill Turnbull **Adam Biberaj** **Tim Whitebread**
 202.513.6713 202.513.6736 202.513.6712
 mturnbull@lpc.com abiberaj@lpc.com twhitebread@lpc.com

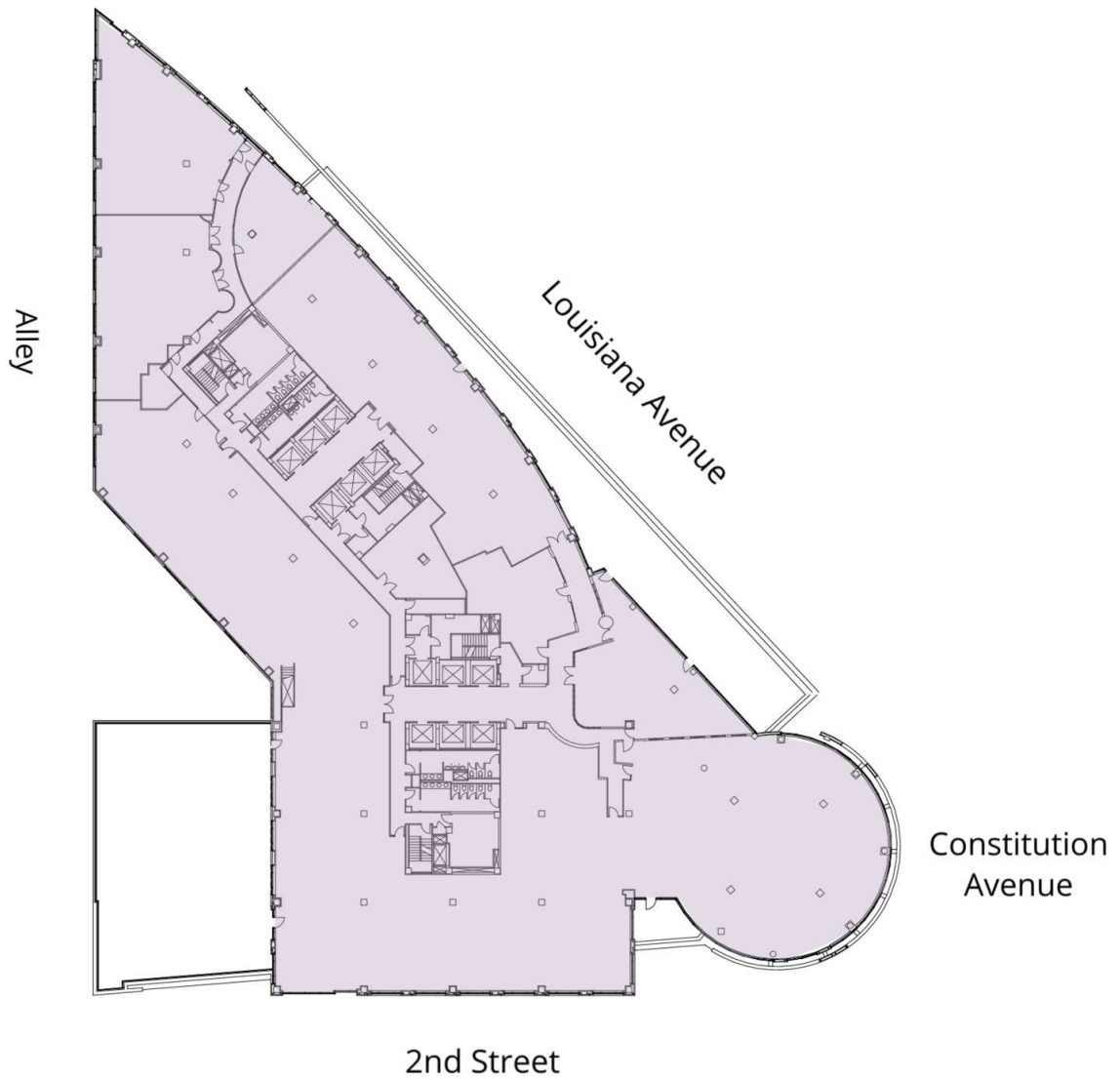




Suite	Size	Description
■ 850W	17,699 SF	Available on 2/2027

Merrill Turnbull **Adam Biberaj** **Tim Whitebread**
 202.513.6713 202.513.6736 202.513.6712
 mturnbull@lpc.com abiberaj@lpc.com twhitebread@lpc.com





Suite	Size	Description
■ 900	44,873 SF	Multiple and expansive private balconies including a large, Capitol facing terrace. Available 2/2027.

Merrill Turnbull **Adam Biberaj** **Tim Whitebread**
202.513.6713 202.513.6736 202.513.6712
mturnbull@lpc.com abiberaj@lpc.com twhitebread@lpc.com

Lincoln



101 CONSTITUTION AVENUE, NW

Washington, DC 20001

Leasing Information:
202.513.6700

Merrill Turnbull
202.513.6713
mturnbull@lpc.com

Adam Biberaj
202.513.6736
abiberaj@lpc.com

Tim Whitebread
202.513.6712
twhitebread@lpc.com

Lincoln

Lincoln Property Company
101 Constitution Avenue, NW Suite 325 East
Washington, DC 20001

www.lpc.com